



# SITE LINES

VOLUME VI  
ISSUE 2

**INSIDE THIS ISSUE:**

Site Steward News	1
Council Chair Message	2
Council Officers	2 & 3
Travels Around New Mexico	4
Upcoming Archaeological Events	5
Educational Meetings	5

## Site Steward News

### SITE STEWARD ANNUAL MEETING

The Annual Site Steward Meeting, camp-out, dinner and educational opportunities is scheduled at Paliza Campground in the Jemez Mountains September 14, 15 and 16. This year, an informative, interesting, educational seminar on aspects of Jemez archaeology will be held Saturday afternoon. A highlight of this year's meeting will be a chili cook off, coordinated by Shelley Thompson. The Annual Meeting committee is working on making this an enjoyable time and worthwhile event for all stewards and their guests. Mark your calendar and plan to come!

~~~~~

**PECOS TEAM**—As the arrival of Spring opened the Forest for Site Steward monitoring, several of the Site Steward teams combined their official duties with pleasant social events.



*Photo by Bill Cella*

*Pecos Team members, from left: Rich Cunningham, Pecos District Archaeologist Brent Abel, Lana Straight, Nancy Cella, Jeff Straight, and retired Pecos Site Steward Curt Hawley. Curt guided Pecos Team members through the Pecos National Historic Park following a team luncheon on May 12. Not pictured but also attending the luncheon were team members Gail Bryant, Clara Zschaler and Bill Cella.*

### RIO CHAMA, by Nancy Krantz

In March, the Rio Chama Team kicked off the spring site monitoring season with a dinner at Café Dominic's. Area Team Leader John McClure, along with his wife Barbara, greeted team members Grant Luckhardt, Paul Jones, Ron and Nancy Krantz to the dinner get together. The team was joined by Council Chair John Morris, Mike Bremer and Anne Baldwin.



*Enjoying a dinner together at Café Dominic's—from left—Mike Bremer, Anne Baldwin, Paul Jones, Grant Luckhardt, Barbara McClure, John McClure, John Morris and Ron Krantz.*

After dinner, Mike and Anne reviewed the different sites in the Rio Chama region and explained how often each site should be visited. Rio Chama Team members worked on site assignments to make sure that sites requiring more frequent visits would be covered by multiple pairs of stewards. Team members discussed their team assignments and decided to plan to make more group outings before making final site assignments.

A team outing was planned for the following Tuesday to Ku and Pesede. John McClure, Paul, Grant, Nancy and Ron braved the rough, rocky road on the drive to Pesede for the first time this year. The following week, Anne met the team at Poshu to orient stewards to the site and to two sites beyond Poshu. However, the weather did not cooperate. Sleet and cold winds drove Anne, Ron, Beth Parisi, Grant, Barbara Riley, Paul and John McClure back to their cars after the Poshu visit before the team could visit the other sites. The team will try to go out again as a group so that Anne can tell them about these numbered sites. The Rio Chama Site Steward Team is eagerly looking forward to another spring, summer and fall monitoring season as they visit the "old" sites and make sure that the "new" ones are visited as well.

## Council Chair Message by John Morris

Greetings, as we approach high Summer!! I have just some random thoughts this time, rather than a themed message. First of all, the monitoring season is in full swing and almost all of our Stewards have been able to get out to their sites. In the somewhat warmer and drier areas, sites have been visited for much of the Spring without having to wait for Forest Service gates to be opened or for roads to dry out.

Three of us were out monitoring some Jemez sites on Saturday, June 2. When we went into the Forest, the "Smoky sign" said the fire danger was "Moderate". When we returned in the late afternoon, the sign had been changed to indicate "High" fire danger. Not a good thing. I hope this is not an indicator of a problem summer on our beautiful Santa Fe National Forest, but we have seen problem times before.

We continue to see newly downed trees and have heard reports from Stewards around the Forest of finding newly downed trees over trails and in monitoring areas. The insect and disease nemesis appears to be a continuing problem. I will repeat a warning I gave last year for you all to please be alert to the possibility that trees can come down when you are out in the field or they can come down across access routes and roads, especially when the wind kicks up. It is a prudent decision to stay home if the wind is predicted to

blow and you would be going into forested areas with large trees. The insect- and disease-weakened trees can come down without warning with even a moderate wind blowing.

As I indicated in a message to all of you via the List Server back in April, Chaco Culture National Historical Park now has its Site Steward program running and they are still looking for Stewards. One of our SFNF Site Stewards, Judith Isaacs, has been a Chaco Steward and was out on another monitoring trip there in May. I made my first official monitoring trip out there this past week and plan to have a long, interesting association with that program. Part of their operating procedure is much different than the approach we use in our SFNFSS program. Stewards are given shirts and hats with patches that identify you as a Natl. Park Service Volunteer, along with a very nice engraved metal name plate to wear on your shift. You are encouraged to engage with Park visitors you might encounter and explain what you are doing. It is an effort to educate the public and to alert them to at least some of the preservation and protection ethic that is so important to keep our cultural heritage safe. There is a



program that is well worth your consideration, and I will provide you with contact information if you are interested.

Our Annual Meeting and camp-out will be held on September 14-16 this year, so be sure to mark your calendars. We still have every reason to believe the event will be held at the

Paliza Group Campground in the Jemez, since that area should re-open around the end of July. All Stewards are encouraged to attend, even if you do not plan to camp. There will be a business meeting that should be of interest to all members, followed by an informative, interesting, educational seminar on aspects of Jemez archaeology that will take up most of Saturday.

We will have an evening meal get-together and the overall program offers great opportunity to learn, to have fun, and to meet and enjoy the company of other Stewards. More information will be provided to you as we get closer to September.

Have a safe and fun and interesting summer, and thank you for your continued participation in the program.

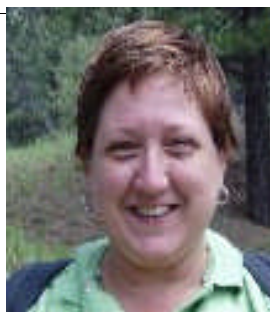
## Council Vice—Chair Shelley Thompson

Shelley is serving her second term as Vice Chair of the Site Steward Program. A steward since 2002, she is AATL for the Caja del Rio as well as Chair of the Education Committee. Shelley has done a fine job of obtaining interesting speakers for the well attended fall and spring dinner meetings and lectures.

Shelley also provided the entrée for the Annual Meeting in 2005 and 2006 and has

agreed to host a chili cook-off, complete with tastings and prizes, this fall at the Annual Meeting in the Jemez.

She and her husband Gary, who is ATL for the Caja, live south of Santa Fe on Highway 14 near the scenic Cerrillos Hills. Shelley is employed by the Center for Museum Resources and oversees Marketing and Out-



reach programs for the state museum and monument system.

A Texas native, Shelley likes cook and visit museums and archaeological sites around the world. Shelley is the proud mom of a 21 year old daughter who is a film student at New York University.

## Ron Krantz—Secretary

Ron Krantz joined the Site Stewards in the class of 2004, shortly after retiring from 35 1/2 years with Los Alamos National Laboratory. During his years at the lab he worked on a variety of computer jobs. The final eight years were with the nonproliferation programs where he had responsibilities for a classified domestic export control database as well as assisting Ukrainians and Kazakhstanis as they developed their own nascent nuclear export advisory computer systems.

Ron's interest in Site Stewardship came from an enjoyment of hiking and visiting our National



Forests. With competing interests vying for the Forest's resources, he saw the program as a means to help preserve those resources for future generations. Since becoming a Site Steward member, Ron has been very impressed with the SFNF personnel directly and indirectly involved with our Site Steward program. They are intelligent, hard-working, and dedicated individuals. Likewise, he has been impressed with the organization, leadership, and

enthusiasm demonstrated by the Site Stewards themselves. His decision to become an officer on the Site Steward Council reflects his desire to see this fine organization continue the tradition it has shown since its inception.

When not doing Site Steward activities, Ron is an avid (though not particularly talented) golfer. He is Treasurer for the Los Alamos Laboratory golf league and is a member of the scholarship committee for the Northern New Mexico Senior Men's Golf Association. Along with his wife, Nancy, he gets absolute enjoyment, yet very tired, from taking care of his granddaughters, ages 5 and 20 months, 2 1/2 days each week. They also have 3 other grandchildren in Spokane, Washington.

## Ray Willison—Treasurer

I have been retired for five years. Before moving to New Mexico fourteen years ago, I was in financial planning, accounting and manufacturing management with General Electric and Tektronix, Inc. While in New Mexico, I did business consulting and economic development. Currently, I am the Treasurer for the Site Stewards, serve on the board of Renesan and volunteer at the Cathedral and Habitat for Humanity.

Living in Santa Fe allows my wife, Corinne, and I to pursue many cultural and educational activities. We attend lectures, classes, plays, the opera and sporting events (Isotopes and Lobos) and enjoy the art galleries. We are avid Lobo fans and have season tickets for men's

basketball.

Undoubtedly, our favorites activities are travel, camping, hiking and archeology. Most of our trips include elements of each. We are blessed to live in a region where we can actively indulge these interests with a seemingly endless number of places to visit.

We became SFNF Site Stewards because it fits well with our interest in the outdoors



and exploring. We were drawn by the ability to visit archeological sites and contribute to their preservation. In the year that we have been Site Stewards, we have been impressed by the dedication of its members and their knowledge of archeology, the environment and our national forest. We hope to contribute to the con-

tinued success of the Forest Service and Site Stewards in preserving the precious archeological resource in the national forest.



# Travels Around New Mexico *By Candie Borduin*

Between Christmas and New Years of 06, Lee and I headed south in our camper to visit one of our favorite places, the Bosque del Apache National Wildlife Refuge. We camped at a RV park near the Bosque and ended up staying for 4 nights while the entire northern portion of the state was closed down with record breaking snows. Realizing we could not go home after a day and a half at the refuge, we looked for broader horizons and began a tour of some fascinating state attractions.

We first ventured south to the Fort Craig National Historic Site just south of the Bosque. Set in the rugged beauty of Socorro County, Fort Craig was one of the largest forts constructed in the West and it played a crucial role in Indian campaigns and the Civil War. The Battle of Valverde was one of the two better known Civil War battles fought in New Mexico. From 1854 to 1885, Fort Craig was strategically located to control Apache and Navajo raiding and protect the central portion of the Camino Real.

The fort was permanently abandoned in 1885; nine years later, it was sold at auction to the Valverde Land and Irrigation Company, the only bidder. The property was eventually donated to the Archaeological Conservancy and was transferred to the BLM in 1981. The site is a BLM Special Management Area and is listed on the National Registry of Historic Places.

To reach Fort Craig, travel south on I-25, take the San Marcial exit (124). Follow the frontage road south for 6.5 miles, turn east on the Fort Craig road. A self guided tour through the entire grounds is augmented with informative signage throughout

the site.

Later that afternoon, we traveled further south to the Camino Real International Heritage Center. The 1500 mile historic trade route that extends from Mexico City to San Juan Pueblo (Ohkay Owingue), is one of the oldest trails in the United States and, for more than a century, one of the longest.

Designated a National Historic Trail in 1993, it is one of New Mexico's most important cultural artifacts.

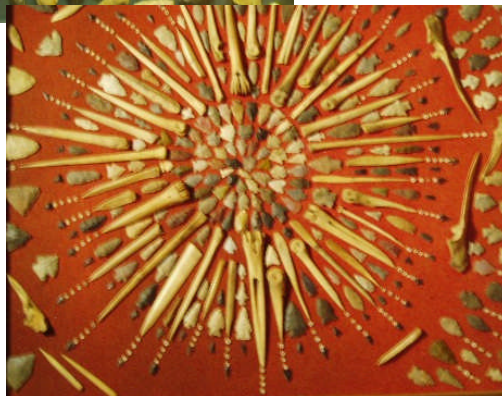
The newest State Monument tells the fascinating story of trade and commerce that traversed the trail, linking Spain, Mexico and the United States at a time when mules, trains and horses were the only means of land travel. The award-winning building is set amidst the pristine Chihuahuan Desert north of the Jornada del Muerto and houses a remarkable exhibit that takes visitors on a virtual journey along the historic trail from Zacatecas, Mexico to Santa Fe.

To reach the Heritage Center, travel south on I-25, take exit 115 east and follow the signs. Allow several hours to tour the exhibits.

Looking back north at impassible roads blocked by record snows, we then traveled even further south to Truth or Consequences to visit the Geronimo Springs Museum. We wandered through paleontological and geological displays, interesting rooms

depicting the history of homesteaders and subsequent settlers to the area.

In the very back room, however, we discovered the "Grannie Chestnut" collection of Mimbres pottery, arrowheads, fetishes and other artifacts. Hundreds of Mimbres bowls were on display, most in pristine condition. The arrowheads numbered in the thousands — displays were not row upon



*Arrowhead displays at the Geronimo Springs Museum in Truth or Consequences. Photos by Candie Borduin*

row but artfully displayed in configurations of tapestries, starbursts, necklaces, etc., each using hundreds of perfect points.

As Site Stewards, we marveled at the artifacts and appreciated this family's bequest of this magnificent collection to a museum where the full magnitude of the collection could be appreciated by many.

As we drove home the following day on newly opened roads bordered by drifts of snow, we reflected upon how fortunate we New Mexicans are to live in a state with such interesting historic and archaeological resources.

**UPCOMING  
ARCHAEOLOGICAL  
EVENTS**

**Laboratory of Anthropology  
Brown Bag Lunches**, 4th Friday  
of month @1200, Meem Auditor-  
ium, Lab of Anthropology.

**Southwest Seminars, Lecture  
Series**, Monday nights 6-7 pm,  
Hotel Santa Fe, Fee.  
www.southwestseminars.org

**Wells Petroglyph Preserve**  
tours, Sept. 22 and Oct. 20. For  
Information, contact office at me-  
saprieta@cybermesa.com or 505-  
852-1351.

**Pecos Conference**,  
August 9-12, 2007  
www.swanet.org/2007\_pecos\_con-  
ference

**Site Steward Annual Meeting**  
September 14, 15 and 16, Paliza  
Campground, Jemez Ranger Dis-  
trict.

**Sun Mountain Gathering**  
Saturday, October 6, 10 -4, Mu-  
seum of Indian Arts and Culture,  
Santa Fe



**SITE LINES**

Is published quarterly by the  
SNFN Site Steward Program  
Editor: Candie Borduin  
186 Co. Rd. 113, Nambe, NM  
87506  
505-455-2882  
cwborduin@att.net

**Site Steward Dinner / Educational Meetings**

The well attended monthly Site Steward brown bag dinners and edu-  
cational programs concluded with the  
coming of Spring.

On March 7, Steve Lakatos from the  
Office of Archaeological Studies  
spoke on cultural continuity in the  
Northern Rio Grande Valley.



*Photos by Rich Cunningham*



comprehensive talk on the past occu-  
pations of the Galisteo Basin and the  
relationships with nearby cultures.  
Eric's comprehensive knowledge of  
ceramics helped to tie the Galisteo  
Basin inhabitants to the Rio Grande  
Pueblos and other early people.

Thanks to Shelley Thompson and  
Mike Bremer for arranging for the  
series of speakers throughout the  
winter and spring. The next formal  
educational opportunities for Site  
Stewards will be at the Annual Meet-  
ing September 14, 15 and 16.

April 4, "An Overview of Galisteo  
Basin Archaeology" was presented by  
Eric Blinman, Ph.D.,  
Director, Office of Archaeological  
Studies, Museum of New Mexico.

Eric has been involved in archae-  
ology in the western United States  
since 1967, focusing on Ancestral  
Puebloan archaeology since 1979. He  
joined the staff of the Museum of New  
Mexico in 1988, and in addition to  
holding several positions within the  
Office of Archaeological Studies, he  
has served as acting director of the  
Museum of Indian Arts and Culture.  
Eric has been involved in issues sur-  
rounding Galisteo Basin archaeology  
since 1993, and he is on the Coordi-  
nation Committee for the Galisteo Ba-  
sin Archaeological Sites Protection  
Act.

Eric presented a fascinating and

**Care to contribute a story,  
share an anecdote about Site  
Stewarding activities,  
commend a colleague, tell  
your peers about an out-  
standing historical or archaeo-  
logical upcoming event**

**OR**

**Become an editor!**

**Contact Candie at  
cwborduin@att.net**